



# BERMA GEARBOXES

 MADE IN ITALY



is a brand of  **REGGIANA  
RIDUTTORI**  
PLANETARY REDUCTION GEAR



## FLOOR DRIVE SOLUTIONS FOR AGRICULTURE

**Berma is a leader in the design and manufacturing of components for manure spreaders and gearboxes.** Active since 1976, its leadership focuses on the production of components for manure spreaders, which, together with its excellent position in the Po Valley, make it a great interpreter of the needs of the agricultural market around the world.

In 2021 it was acquired - through Reggiana Riduttori - by the Interpump Group, with the aim of strengthening the group's specialization in the sector of new transmission technologies dedicated to agriculture and in the engineering of solutions in a circular economy perspective.

**In 2022, with the company merger, Berma becomes a Reggiana Riduttori brand.**

The company now covers an area of 22,000 square meters of which 5,000 are dedicated to the processing, assembly and storage phases of our components.



**Berma è leader nella progettazione e realizzazione di componenti per spandiletame e scatole ingranaggi.**

*Attiva sin dal 1976, incentra il suo primato sulla produzione di componenti per carri spandiletame, che, insieme all'ottimale posizione in territorio padano, la rendono una grande interprete delle esigenze del mercato agricolo di tutto il mondo. Nel 2021 viene acquisita - attraverso Reggiana Riduttori - dal Gruppo Interpump, con l'obiettivo di rafforzare la specializzazione del gruppo nel settore delle nuove tecnologie di trasmissione dedicate all'agricoltura e nell'ingegnerizzazione di soluzioni in un'ottica di economia circolare.*

**Nel 2022, con la fusione societaria, Berma diventa un brand di Reggiana Riduttori.**

*L'azienda ricopre oggi una superficie di 22.000 metri quadri di cui 5.000 dedicati alle fasi della lavorazione, montaggio e stoccaggio dei nostri articoli.*

**LESS OVERALL DIMENSIONS**

**100% MANUFACTURED IN ITALY**

**INCREASING THE TORQUE OF YOUR ORBITAL MOTOR**

## NEW GEARBOXES FOR YOUR BELT OR CHAIN DRIVE



### RT 45



CODE	HOLE E8	KEY E8	INPUT SHAFT	WEIGHT KG.	RATIO	OUTPUT TORQUE Nm
BI9247	30	8	Ø25	11	1.9:1	450
BI9233	35	10				
BI9232	1 3/8" Z6					

### RT 50



CODE	HOLE E8	KEY E8	INPUT SHAFT	WEIGHT KG.	RATIO	OUTPUT TORQUE Nm
BI15844	30	8	Ø25	11	1.9:1	500
BI15845	35	10				
BI15846	1 3/8" Z6					
BI15847	30	8	Ø32	11	1.9:1	500
BI15848	35	10				
BI15849	1 3/8" Z6					

### RT 100 + PDF



CODE	HOLE E8	KEY E8	INPUT SHAFT	WEIGHT KG.	RATIO	OUTPUT TORQUE Nm
BI17675	35	10	Ø1 3/8" Z6	18	3.1:1	1000
BI17676	40	12				

### RT 110



CODE	HOLE E8	KEY E8	INPUT SHAFT	WEIGHT KG.	RATIO	OUTPUT TORQUE Nm
BI18697	35	10	Ø25	15	3.1:1	1000
BI18214	40	12				
BI18698	35	10	Ø32	15	3.1:1	1000
BI18215	40	12				

### RT 90



CODE	HOLE E8	KEY E8	INPUT SHAFT	WEIGHT KG.	RATIO	OUTPUT TORQUE Nm
BI9257	30	8	Ø25	12	3.1:1	900
BI9258	35	10				
BI9260	1 3/8" Z6					

### RT 90-EC



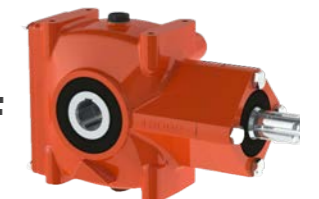
CODE	HOLE E8	KEY E8	INPUT SHAFT	WEIGHT KG.	RATIO	OUTPUT TORQUE Nm
BI13694	30	8	Ø25	13	3.1:1	900
BI13695	35	10				
BI13696	1 3/8" Z6					
BI13697	30	8	Ø32	13	3.1:1	900
BI13475	35	10				
BI13698	1 3/8" Z6					

### RT 120



CODE	HOLE E8	KEY E8	INPUT SHAFT	WEIGHT KG.	RATIO	OUTPUT TORQUE Nm
BI13106	35	10	Ø25	19	4.1:1	1200
BI13039	40	12				
BI16686	1 3/8" Z6					

### RT 120 + PDF



CODE	HOLE E8	KEY E8	INPUT SHAFT	WEIGHT KG.	RATIO	OUTPUT TORQUE Nm
BI16805	35	10	Ø 1 3/8 Z6	22	4.1:1	1200
BI16806	40	12				
BI16807	1 3/8" Z6					

### RT 90-EC + PDF



CODE	HOLE E8	KEY E8	INPUT SHAFT	WEIGHT KG.	RATIO	OUTPUT TORQUE Nm
BI16792	30	8	Ø1 3/8" Z6	17	3.1:1	900
BI16793	35	10				
BI16794	1 3/8" Z6					

### RT 100



CODE	HOLE E8	KEY E8	INPUT SHAFT	WEIGHT KG.	RATIO	OUTPUT TORQUE Nm
15683	35	10	Ø25	14	3.1:1	1000
15542	40	12				
15684	35	10				
15531	40	12	Ø32	14	3.1:1	1000

### RT 130



CODE	HOLE E8	KEY E8	INPUT SHAFT	WEIGHT KG.	RATIO	OUTPUT TORQUE Nm
BI18601	35	10	Ø25	20	4.1:1	1300
BI18602	40	12				
BI18603	35	10	Ø32	20	4.1:1	1300
BI18604	40	12				

### RT 145



CODE	HOLE E8	KEY E8	INPUT SHAFT	WEIGHT KG.	RATIO	OUTPUT TORQUE Nm
BI15996	35	10	Ø25	21	4.1:1	1400
BI15997	40	12				
BI15998	35	10	Ø32	21	4.1:1	1400
BI15999	40	12				

\*Other shaft solutions available on request

## NEW GEARBOXES FOR YOUR BELT OR CHAIN DRIVE



### RT 145 + PDF



CODE	HOLE E8	KEY E8	INPUT SHAFT	WEIGHT KG.	RATIO	OUTPUT TORQUE Nm
BI17678	35	10	Ø1 3/8" Z6	25	4.1:1	1400
BI17679	40	12				

### RT 150



CODE	HOLE E8	KEY E8	INPUT SHAFT	WEIGHT KG.	RATIO	OUTPUT TORQUE Nm
BI8839	35	10	Ø25	20	12:1	1500
BI8840	40	12				

### RT 250



CODE	HOLE E8	KEY E8	INPUT SHAFT	WEIGHT KG.	RATIO	OUTPUT TORQUE Nm
BI14883	40	12	Ø25	34	21.1:1	2600
BI14884	45	12				
BI14885	50	14				

### RT 260



CODE	HOLE E8	KEY E8	INPUT SHAFT	WEIGHT KG.	RATIO	OUTPUT TORQUE Nm
BI16821	40	12	Ø25	36	21.1:1	2600
BI16822	45	12				
BI16823	50	14				

### RT 160



CODE	HOLE E8	KEY E8	INPUT SHAFT	WEIGHT KG.	RATIO	OUTPUT TORQUE Nm
BI8977	35	10	Ø25	22	8.4:1	1500
BI8978	40	12				

### RT 190



CODE	HOLE E8	KEY E8	INPUT SHAFT	WEIGHT KG.	RATIO	OUTPUT TORQUE Nm
BI10323	35	10	Ø25	28	10.2:1	1900
BI10324	40	12				
BI10325	45	12				

### RT 300



CODE	HOLE E8	KEY E8	INPUT SHAFT	WEIGHT KG.	RATIO	OUTPUT TORQUE Nm
BI8900	35	10	Ø25	34	29.5:1	3000
BI8640	40	12				
BI8670	45	12				

### RT 320



CODE	HOLE E8	KEY E8	INPUT SHAFT	WEIGHT KG.	RATIO	OUTPUT TORQUE Nm
BI16661	35	10	Ø25	33	29.5:1	3000
BI16662	40	12				
BI16663	45	12				

### RT 200



CODE	HOLE E8	KEY E8	INPUT SHAFT	WEIGHT KG.	RATIO	OUTPUT TORQUE Nm
BI9356	35	10	Ø25	27	16.4:1	2000
BI9357	40	12				
BI9358	45	12				

### RT 210



CODE	HOLE E8	KEY E8	INPUT SHAFT	WEIGHT KG.	RATIO	OUTPUT TORQUE Nm
BI17245	35	10	Ø25	27	16.4:1	2000
BI17246	40	12				
BI17247	45	12				

### RT 350



CODE	HOLE E8	KEY E8	INPUT SHAFT	WEIGHT KG.	RATIO	OUTPUT TORQUE Nm
BI10318	40	12	Ø25	39	31.4:1	3500
BI10319	45	12				
BI10320	50	14				

### RT 350I



CODE	HOLE E8	KEY E8	INPUT SHAFT	WEIGHT KG.	RATIO	OUTPUT TORQUE Nm
BI17401	40	12	Ø25	38	31.4:1	3500
BI17402	45	12				
BI17403	50	14				

\*Other shaft solutions available on request

## NEW GEARBOXES FOR YOUR BELT OR CHAIN DRIVE



### RT 360



CODE	HOLE E8	KEY E8	INPUT SHAFT	WEIGHT KG.	RATIO	OUTPUT TORQUE Nm
17995	40	12	Ø25	38	31.4:1	3500
17996	45	12				
17997	50	14				

### RT 360 + PDF



CODE	HOLE E8	KEY E8	INPUT SHAFT	WEIGHT KG.	RATIO	OUTPUT TORQUE Nm
18005	40	12	Ø1 3/8" Z6	41	31.4:1	3500
18006	45	12				
18007	50	14				

### RT 500



CODE	HOLE E8	KEY E8	INPUT SHAFT	WEIGHT KG.	RATIO	OUTPUT TORQUE Nm
8981	50	14	Ø25	53	43.6:1	5000
8982	55	16				
9063	60	18				

### RT 500 + PDF



CODE	HOLE E8	KEY E8	INPUT SHAFT	WEIGHT KG.	RATIO	OUTPUT TORQUE Nm
10408	50	14	Ø1 3/8" Z6	56	43.6:1	5000
16809	55	16				
16810	60	18				

### RT 400



CODE	HOLE E8	KEY E8	INPUT SHAFT	WEIGHT KG.	RATIO	OUTPUT TORQUE Nm
BI9160	45	12	Ø25	44	35.2:1	3900
BI9161	50	14				
BI9162	55	16				

### RT 400 2V



CODE	HOLE E8	KEY E8	INPUT SHAFT	WEIGHT KG.	RATIO	OUTPUT TORQUE Nm
BI9220	45	12	Ø25	55	1) 35.2:1 2) 17.8:1	3900
BI9221	50	14				
BI9222	55	16				

### RT 520



CODE	HOLE E8	KEY E8	INPUT SHAFT	WEIGHT KG.	RATIO	OUTPUT TORQUE Nm
BI16001	50	14	Ø25	53	43.6:1	5000
BI16002	55	16				
BI16003	60	18				

### RT 650



CODE	HOLE E8	KEY E8	INPUT SHAFT	WEIGHT KG.	RATIO	OUTPUT TORQUE Nm
BI15376	55	16	Ø25	67	37.8:1	6400
BI15377	60	18				
BI15378	65	18				
BI15379	55	16	Ø32	67	37.8:1	6400
BI15380	60	18				
BI15381	65	18				

### RT 420



CODE	HOLE E8	KEY E8	INPUT SHAFT	WEIGHT KG.	RATIO	OUTPUT TORQUE Nm
BI15801	45	12	Ø25	43.4	35.2:1	4000
BI15802	50	14				
BI15803	55	16				

### RT 430 B



CODE	HOLE E8	KEY E8	INPUT SHAFT	WEIGHT KG.	RATIO	OUTPUT TORQUE Nm
BI16052	45	12	Ø32	53	10.9:1	4300
BI16053	50	14				
BI16054	55	16				

### RT 800



CODE	HOLE E8	KEY E8	INPUT SHAFT	WEIGHT KG.	RATIO	OUTPUT TORQUE Nm
BI9479	55	16	Ø25	79	31.7:1	8000
BI9470	60	18				
BI9480	65	18				
BI9481	55	16	Ø32	79	31.7:1	8000
BI9482	60	18				
BI9483	65	18				

### RT 1000



CODE	HOLE E8	KEY E8	INPUT SHAFT	WEIGHT KG.	RATIO	OUTPUT TORQUE Nm
BI13438	60	18	Ø25	97	38.7:1	9700
BI13439	65	18				
BI13440	70	20				
BI13441	60	18	Ø32	97	38.7:1	9700
BI13442	65	18				
BI13443	70	20				

\*Other shaft solutions available on request



# BERMA

## APPLICATIONS

### MANURE SPREADER



### Other applications

SALT SPREADER

TURF & LIME SPREADER

SUGAR BEET & POTATO HARVESTER

STRAW BLOWER

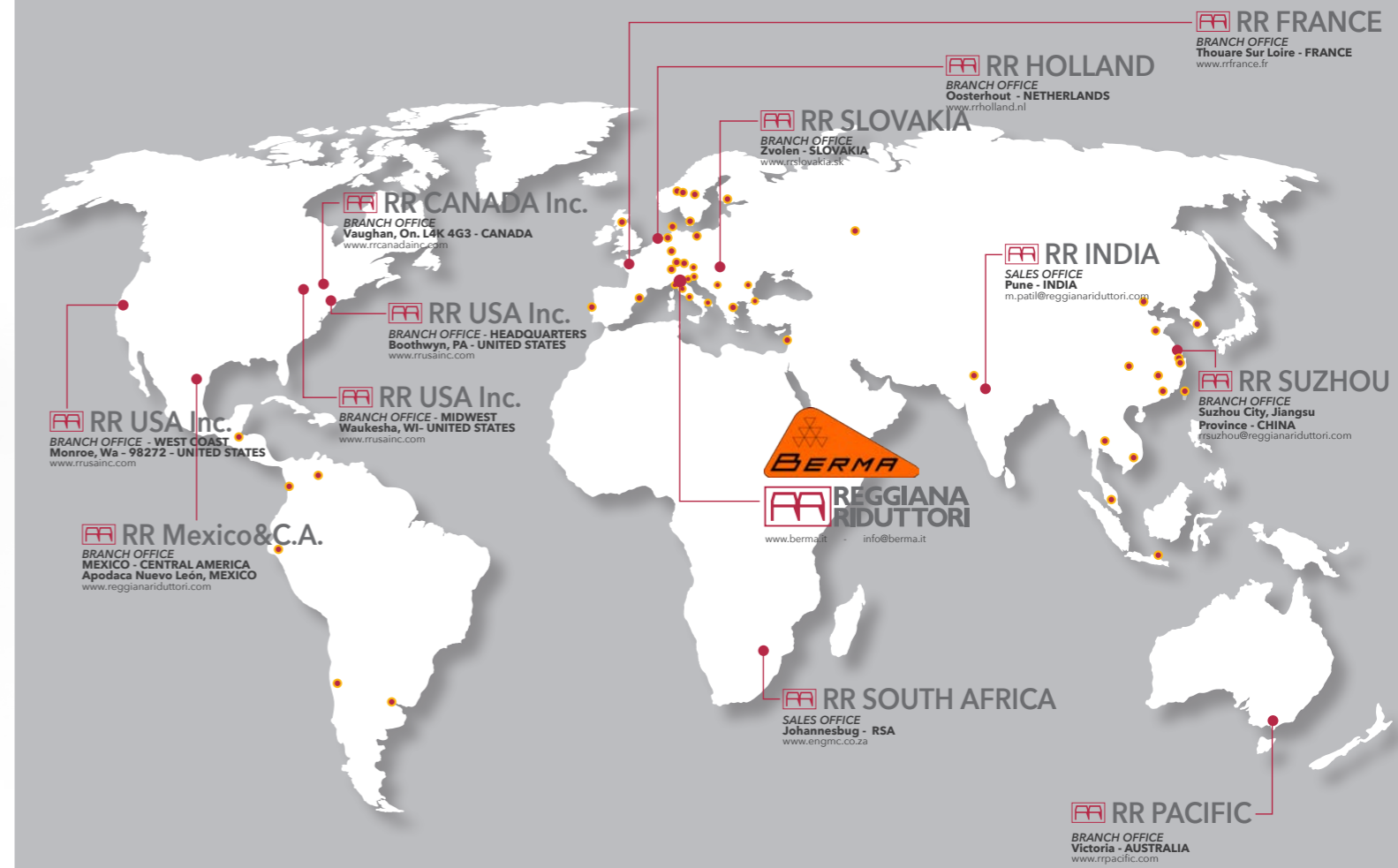
CONVEYORS

CONCRETE MIXER

# GLOBAL

## SALES NETWORK

- MASTER DISTRIBUTOR
- BRANCH



**[www.berma.it](http://www.berma.it)**

**REGGIANA RIDUTTORI S.r.l.**

Via Martiri di Marzabotto,7  
42020 - S. Polo d'Enza (RE) - ITALY  
tel. +39.0522.259111 - fax +39.0522.874321  
info@reggianariduttori.com

**BERMA BUSINESS UNIT**

Strada 1° Maggio, 1 | 46010 Gazzuolo (MN) ITALY  
info@berma.it | Ph. +39 0376 97315



is a brand of Reggiana  
Riduttori Srl

A member of



 **REGGIANA  
RIDUTTORI**  
PLANETARY REDUCTION **GEARS**